

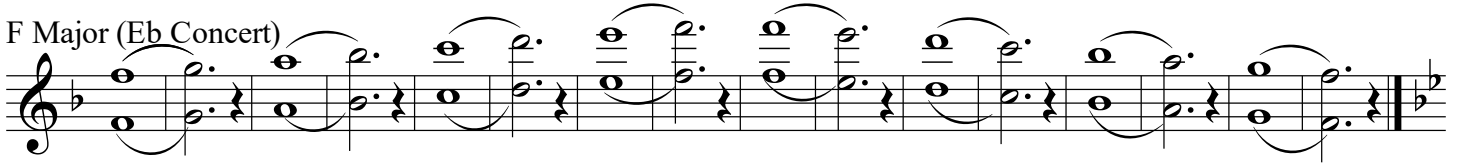
Score

Scales Tenor Sax

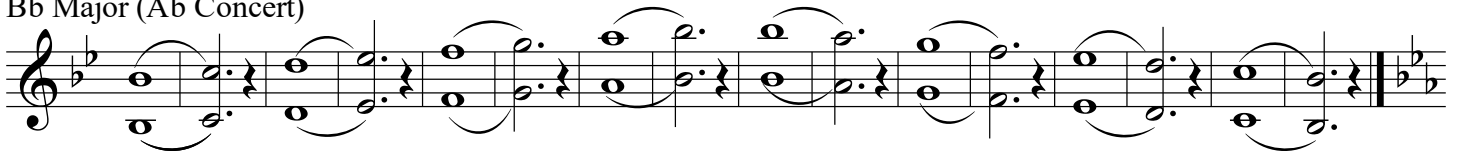
C Major (Bb Concert)



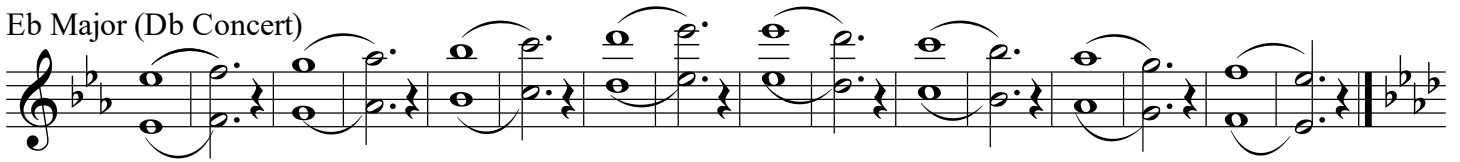
F Major (Eb Concert)



Bb Major (Ab Concert)



Eb Major (Db Concert)



Ab Major (Gb Concert)



Db Major (Cb or B Concert)



Gb Major (Fb or E Concert)



G Major (F Concert)



D Major (C Concert)

Musical notation for D Major (C Concert) on a tenor saxophone. The key signature has two sharps (F# and C#). The melody consists of a sequence of eighth notes: D4, E4, F#4, G4, A4, B4, C#5, D5, C#5, B4, A4, G4, F#4, E4, D4. The notes are grouped in pairs with slurs and stems pointing down. The piece ends with a double bar line and a key signature change to three sharps (F#, C#, G#).

A Major (G Concert)

Musical notation for A Major (G Concert) on a tenor saxophone. The key signature has three sharps (F#, C#, G#). The melody consists of a sequence of eighth notes: A3, B3, C#4, D4, E4, F#4, G#4, A4, G#4, F#4, E4, D4, C#4, B3, A3. The notes are grouped in pairs with slurs and stems pointing down. The piece ends with a double bar line and a key signature change to four sharps (F#, C#, G#, D#).

E Major (D Concert)

Musical notation for E Major (D Concert) on a tenor saxophone. The key signature has four sharps (F#, C#, G#, D#). The melody consists of a sequence of eighth notes: E3, F#3, G#3, A3, B3, C#4, D4, E4, D4, C#4, B3, A3, G#3, F#3, E3. The notes are grouped in pairs with slurs and stems pointing down. The piece ends with a double bar line and a key signature change to five sharps (F#, C#, G#, D#, A#).

B Major (A Concert)

Musical notation for B Major (A Concert) on a tenor saxophone. The key signature has five sharps (F#, C#, G#, D#, A#). The melody consists of a sequence of eighth notes: B2, C#3, D#3, E3, F#3, G#3, A#3, B3, A#3, G#3, F#3, E3, D#3, C#3, B2. The notes are grouped in pairs with slurs and stems pointing down. The piece ends with a double bar line and a key signature change to six sharps (F#, C#, G#, D#, A#, E#).

F# Major (E Concert)

Musical notation for F# Major (E Concert) on a tenor saxophone. The key signature has six sharps (F#, C#, G#, D#, A#, E#). The melody consists of a sequence of eighth notes: F#2, G#2, A#2, B2, C#3, D#3, E#3, F#3, E#3, D#3, C#3, B2, A#2, G#2, F#2. The notes are grouped in pairs with slurs and stems pointing down. The piece ends with a double bar line.